

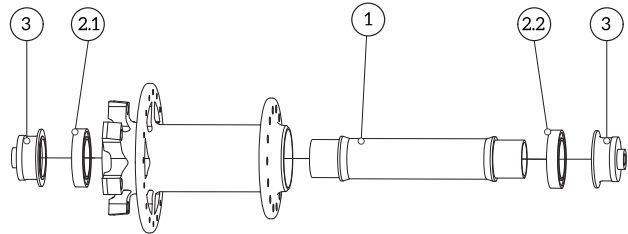
ZERO

TECHNICAL SUPPORT



Parts

ITEM	Component description	Part number / Reference
	Hub 32H (Black)	P22.25.001
1	Axle	P22.99.057
2.1	Hub Bearings R	P52.01.039
2.2	Hub Bearings L	P52.01.039
3	Caps 9x100mm L+R+QR	P22.99.059
3.1	Caps 15x100mm L+R	P22.99.058

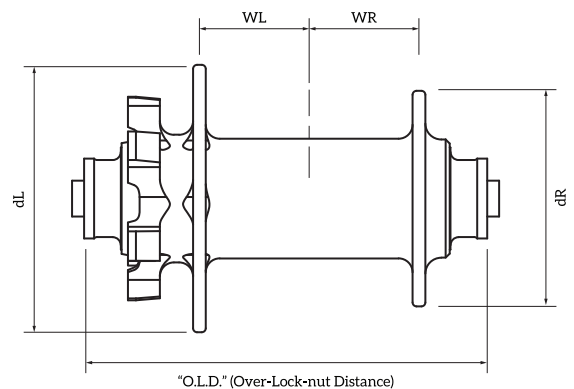


Specifications

Description / specification	Component description
Model	Zero
Material	Aluminium
Number of holes	32
Colours:	Black
Clamping:	Quickrelease or Thru-Axle
Axle diameter	15 mm
Axle system	9x100mm / 15x100mm
Bearings	2x 6903
Max spoke tension:	1250N
Disc Mount	IS (6-bolt)
Weight (15mm)	153 gr

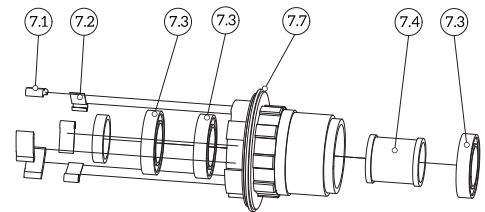
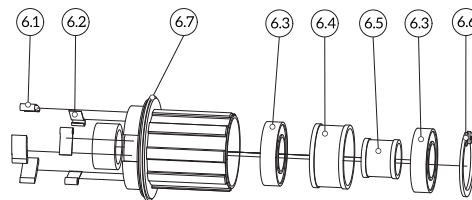
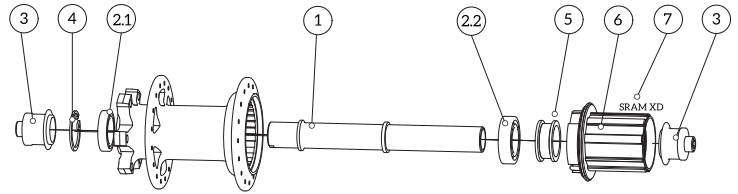
Hub Flanges Measures

dL	51mm
dR	58mm
WL	22mm
WR	33mm
O.L.D.	100mm



Parts

ITEM	Component description	Part number / Reference
	Hub 32H (Black)	P22.25.002
1	Axle	P22.99.056
2.1	Hub Body Bearings Left	P52.01.008
2.2	Hub Body Bearings Right	P52.01.008
3.1	Caps 10x135mm (Shimano/SRAM 10/11S)	P22.99.060
3.2	Caps 10x135mm (Sram XD)	P22.99.061
3.3	Caps 12x142mm (Shimano/SRAM 10/11S)	P22.99.063
3.4	Caps 12x142mm (Sram XD)	P22.99.062
4	Seal\ Lock	P22.99.029
5	Spacer Hub Body Freewheel Shimano	P22.99.047
5.1	Spacer Hub Body Freewheel SRAM XD	P22.99.048
6	Freewheel Shimano 10/11S	P22.99.036
6.1+6.2	Pawls + Spring	P22.99.026
6.2	Spring	P22.99.039
6.3	Bearing (Shimano)	P51.01.008
6.6	Seal\ Lock	P22.99.029
6.7	Seal	P22.99.030
7	Freewheel SRAM XD	P22.99.037
7.1 + 7.2	Freewheel SRAM Pawls + Spring	P22.99.026
7.2	Spring	P22.99.039
7.3	Bearing (SRAM XD)	P52.01.006
7.7	Seal	P22.99.030
	Lubricant Freewheels 10ml	P26.01.002



Specifications

Description / specification	Component description
Model	ZERO
Material	Aluminium
Number of holes	32
Colours:	Black
Clamping:	Quickrelease or Thru-Axle
Axle diameter	12 mm
Axle system	10x135mm / 12x142mm
Bearings Body	2x 6902
Freewheel body	Shimano/SRAM 10/11S or SRAM XD
Freewheel bearing Shimano	2x 6902
Freewheel bearing XD	3x 6802
Sealing	Dust cap, washer and rubber lip seal
Max spoke tension:	1250N
Disc Mount	IS (6-bolt)
Weight (12mm XD)	278 gr

Hub Flanges Measures

dL	58 mm
dR	58 mm
WL	31 mm
WR	19 mm
O.L.D.	135/142 mm

